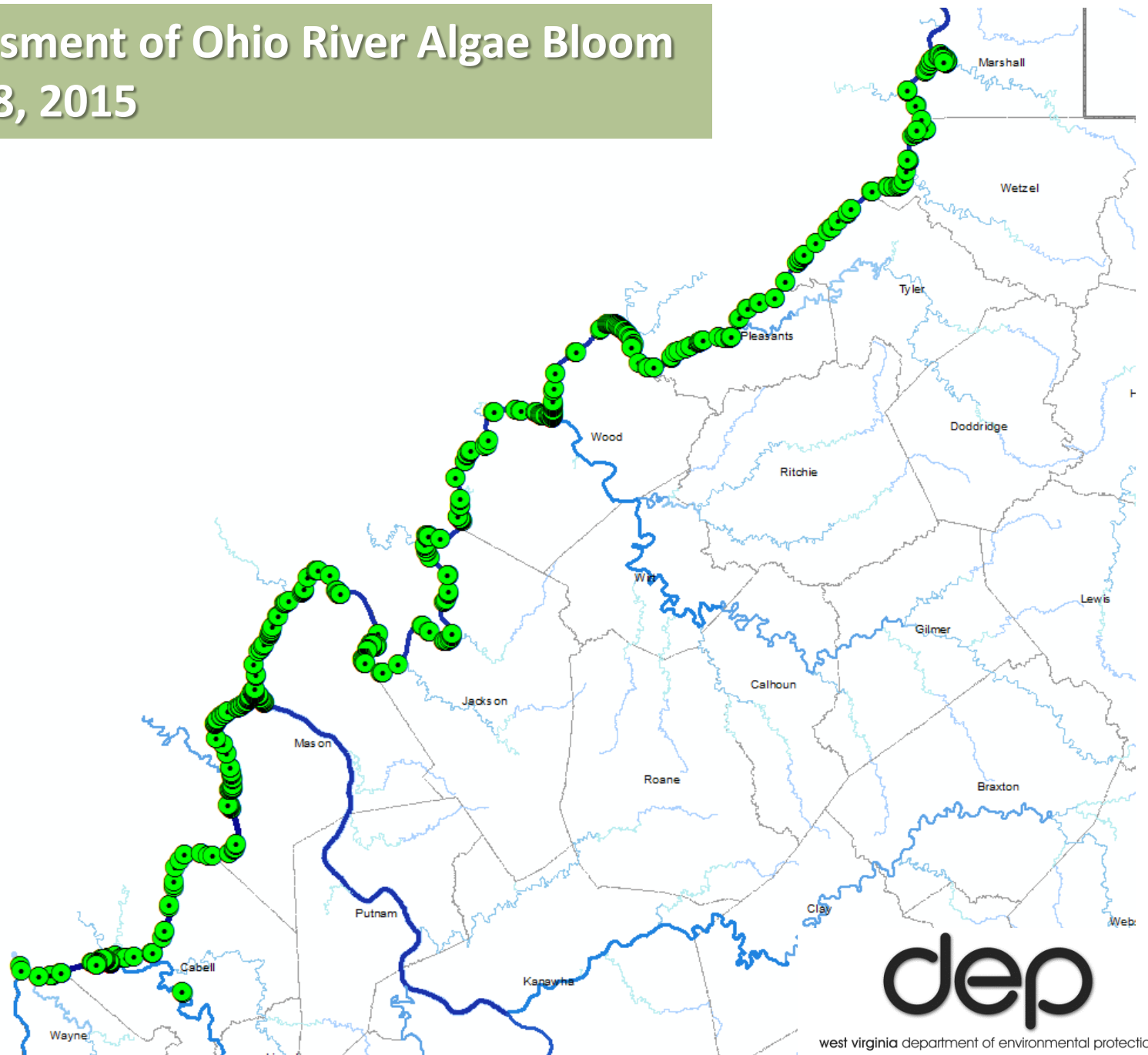


# Aerial Assessment of Ohio River Algae Bloom September 8, 2015





WV State Aviation: Sgt S. A. Colbert

WVDEP – DWWM: John Wirts, Michael Whitman, Laura Cooper

WV DHHR – BPH: Scott Rodeheaver

Flew over the WV Section of the Ohio from Big Sandy River upstream to Fish Creek just downstream of Moundsville in the Hannibal Pool.

Wednesday, Sept 8, 2015

~ 1:30 pm to 4:00 pm.



west virginia department of environmental protection

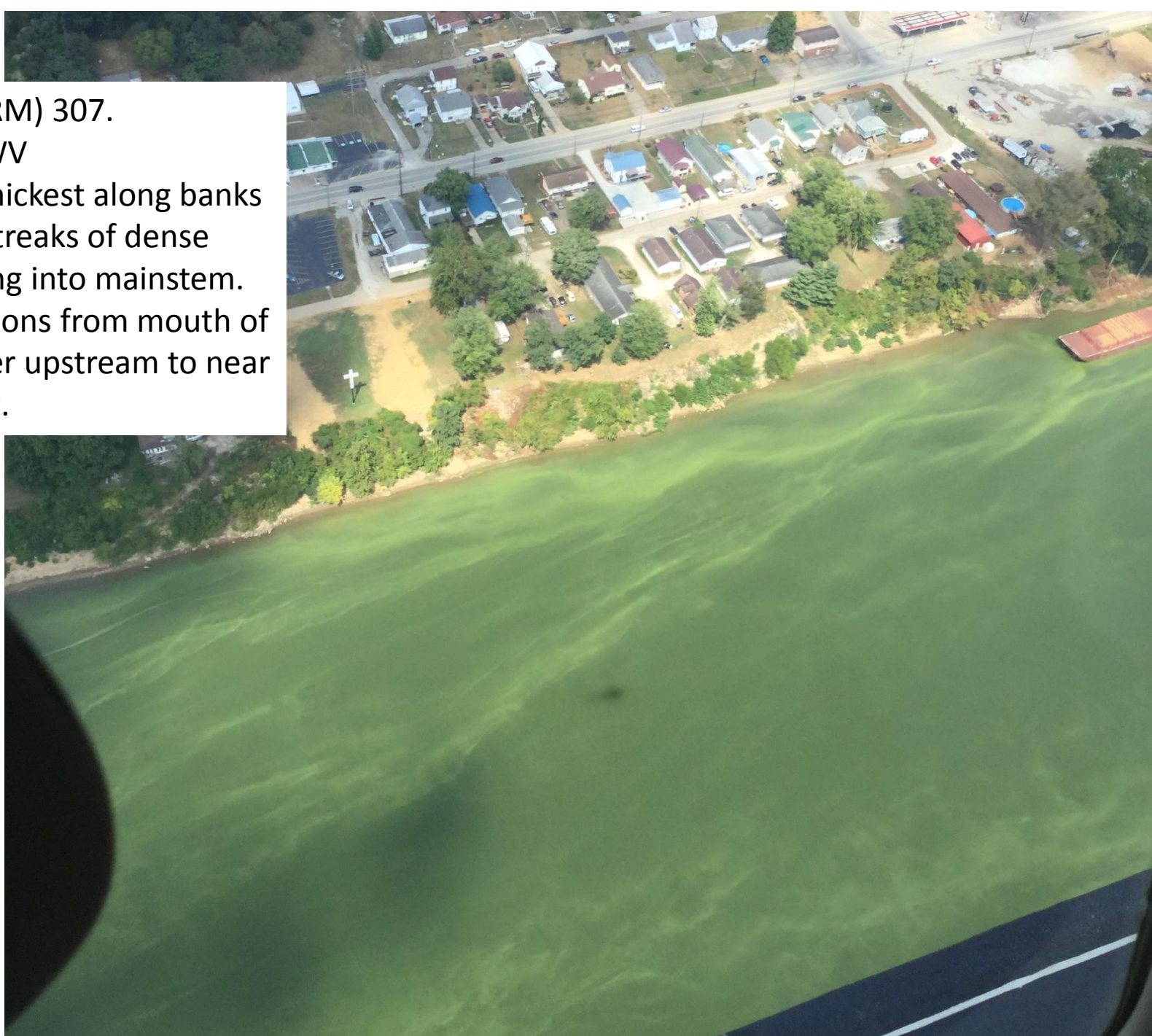


~ River mile (RM) 307.

Huntington, WV

Algal bloom thickest along banks  
with regular streaks of dense  
algae extending into mainstem.

Similar conditions from mouth of  
Big Sandy River upstream to near  
Point Pleasant.





RM 305.  
Mouth of Guyandotte  
River – Cabell Co, WV

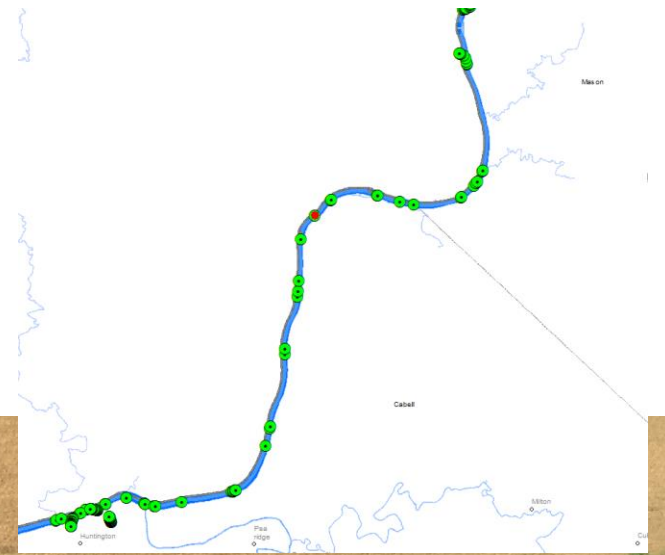
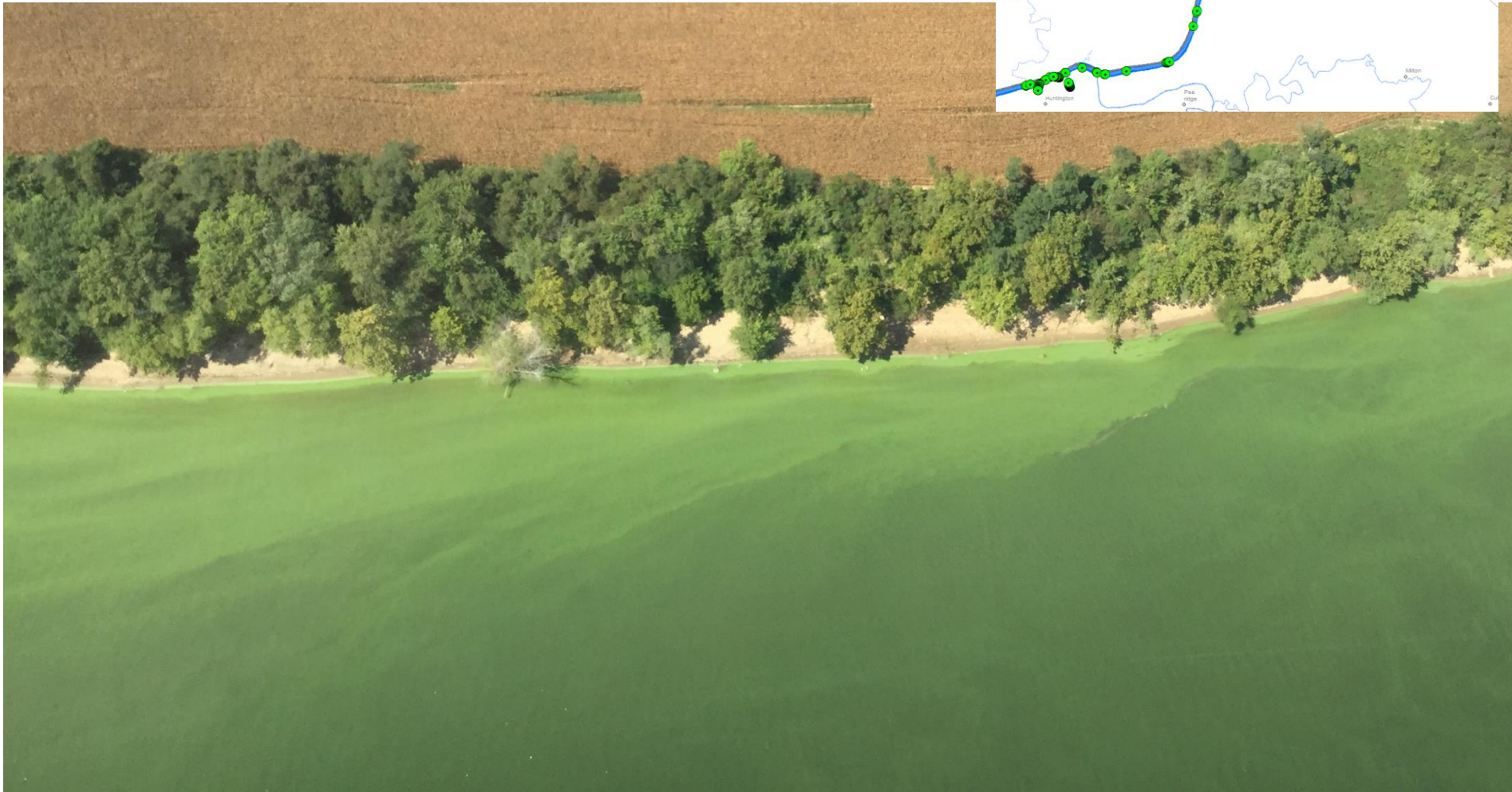


~ RM 302.  
~ 2.5 miles upstream of  
Guyandotte River

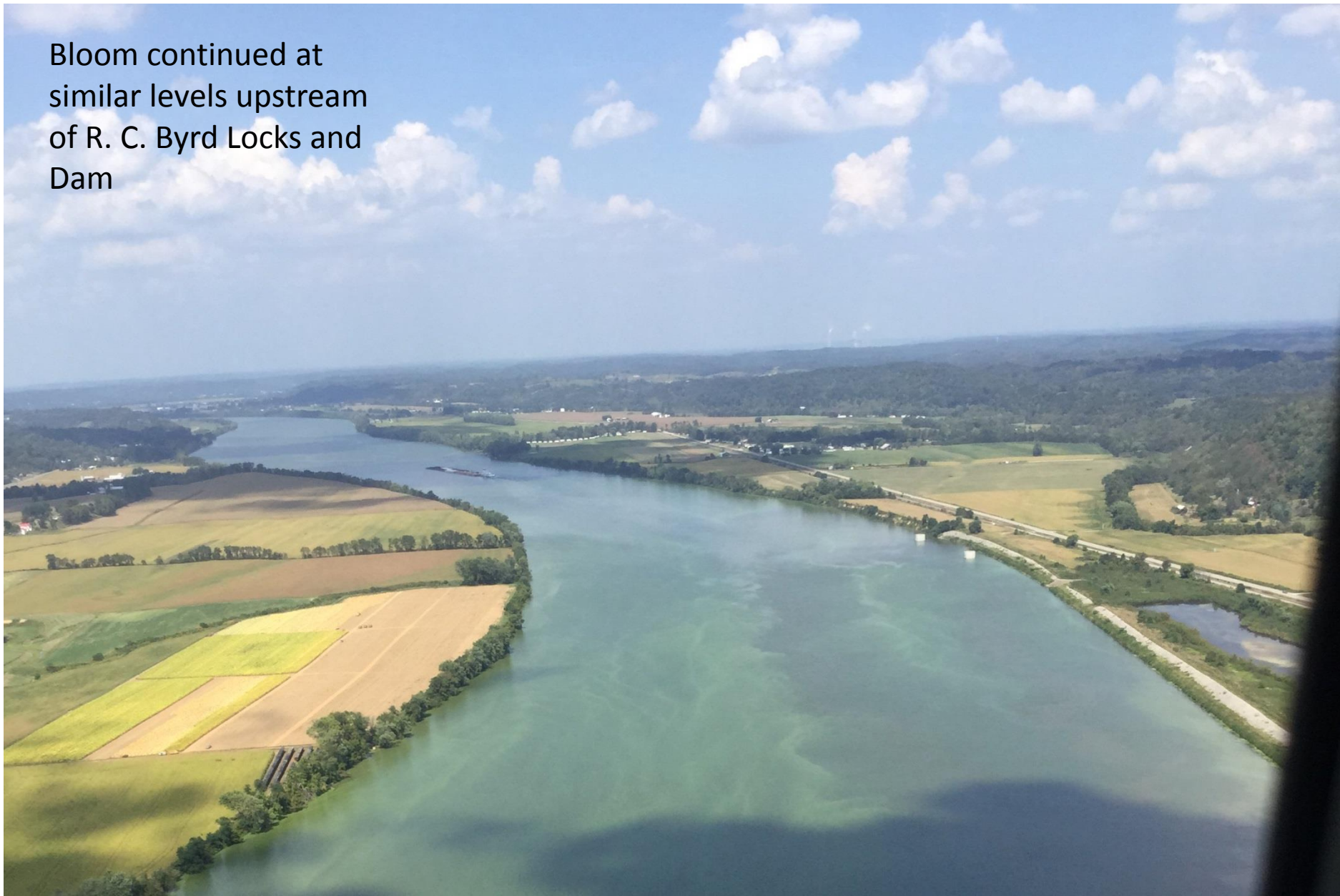




RM 291  
Near Crown City , OH



Bloom continued at  
similar levels upstream  
of R. C. Byrd Locks and  
Dam





RM 269  
Ohio River at Gallipolis, OH.





RM 267.  
Just downstream of  
Point Pleasant, WV



Kanawha River near mouth.  
Point Pleasant, WV





Kanawha River at mouth.  
Point Pleasant, WV  
Algal bloom limited to confluence w Ohio River.



RM 250.  
Pomeroy ,OH

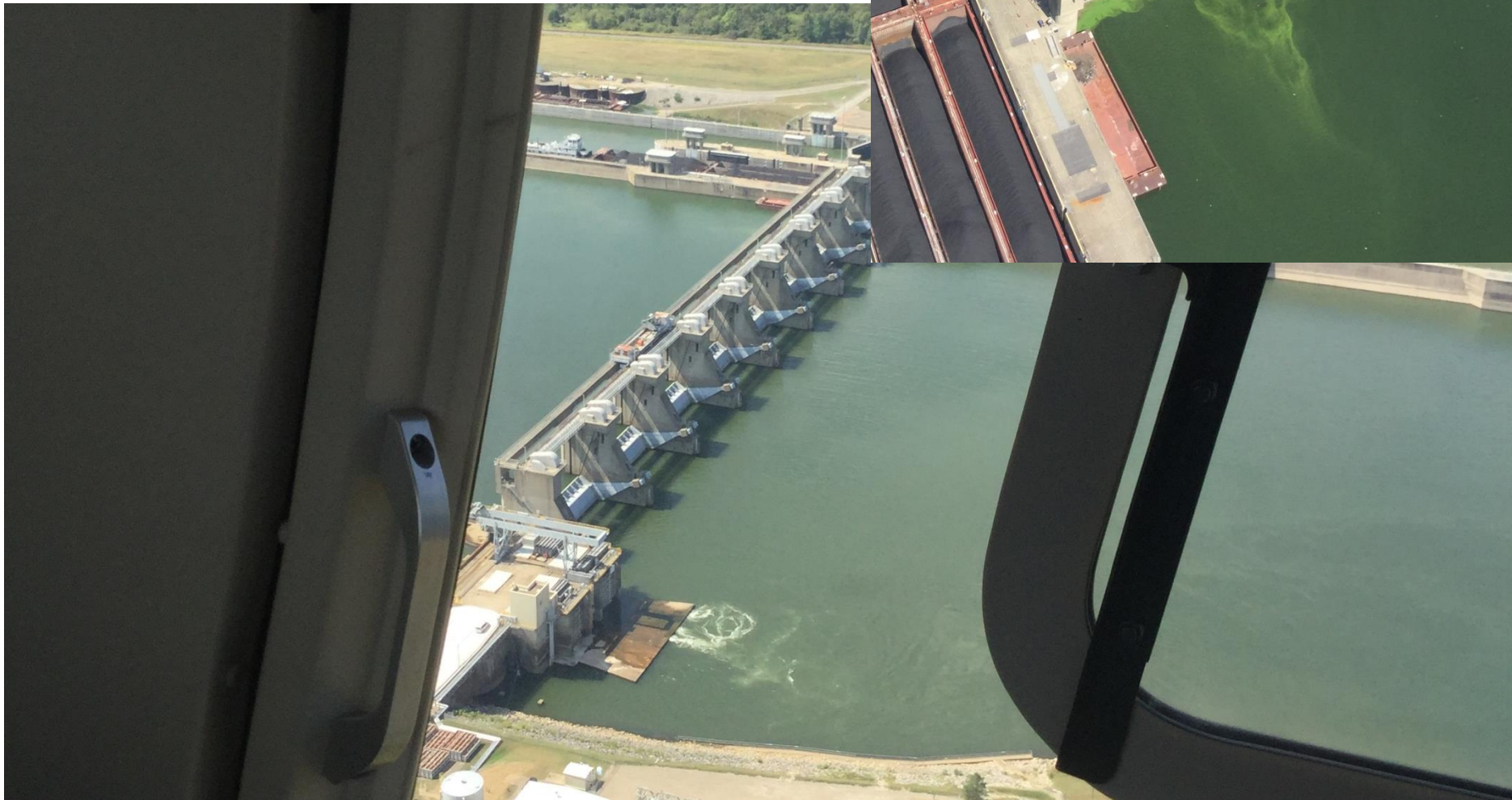




~ RM 245  
Syracuse, OH/  
New Haven, WV



Racine L&D  
RM 238.  
Diffuse bloom observed





RM 225

Just downstream of Ravenswood, WV.

River looks green, but fewer areas of concentrated blooms



RM 209  
Near Murraysville, WV





RM 204.

Belleville L&D, WV

Barely perceptible algae sheen visible



RM 186

Just downstream of  
Parkersburg, WV  
Upstream end of  
Blennerhassett Island





RM 184

Just upstream of Little Kanawha River in Parkersburg.  
Example of how cloud cover impacts algae appearance





Mouth of Muskingum  
River ~ RM 172. No  
bloom observed in  
Muskingum.





RM 171.

At Marietta, OH.

Upstream of Muskingum River





RM 159. Just upstream of Willow Island L&D  
Ohio side of Middle Brothers (Broadback) Island





Obvious blooms become less continuous in upper half of Willow Island Pool.  
Mostly limited to near both banks with areas of lesser flow with occasional streaks into mainstem. Photo from RM 143 near Friendly, WV



RM 136. Upstream of Sistersville, WV. Ohio bank





RM 130. Just downstream of New Martinsville, WV.  
River is green, but no concentrated blooms apparent.



Sunfish Creek at Clarington, OH  
RM 118. No bloom evident





Heavy algal bloom in Fish Creek ~ 2 miles upstream of mouth (enters Ohio River at RM 114).  
Bloom not nearly as evident in lower 1.5 miles of creek.





RM 114. Just upstream of Fish  
Creek (WV).  
This was upstream extent of aerial  
photos from September 8.

