



KANAWHA STATE FOREST



DID YOU KNOW?

- Kanawha State Forest was established in 1937 and subsequently transformed after the heavy mining and logging of the past.
- Kanawha State Forest has a distinctive type of wetland called vernal pools. These are small, shallow, ephemeral water bodies that are shaded by the forest and very important to amphibian life.
- It is important to drive carefully and slowly in Kanawha SF, as wildlife, even small salamanders, may have to cross roads to reach their vernal pools.



Vernal pools are seasonal and lack the presence of fish, making them the ideal place to host a multitude of amphibian species. Young tadpoles and salamander larvae metamorphose quickly and reenter the forest before the pools dry up. Within the wetlands of the Forest, there are eight salamanders, six anurans, and three reptiles that depend on wetland habitat for breeding, feeding, and overwintering. The Spotted Salamander Trail allows observers to view and learn about vernal pools without disturbing the habitat.

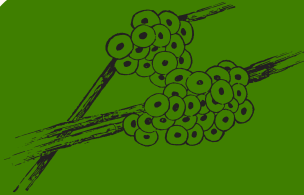
Kanawha State Forest's vernal pools are unique ecosystems because:



vernal pools are amphibian biodiversity hotspots.



hydrophytic plant species depend on the pools' steady release of water.



vernal pools can provide habitat for different plant and animal species each season.



they are forested wetlands, a high-quality wetland habitat in WV.



Public use of the area includes guided hiking tours, bird watching, and a paved loop trail with informational signage.

BIRDS YOU MAY SEE:

- American woodcock
- Blue-winged warbler
- Eastern whip-poor-will
- Great blue heron
- Green heron
- Louisiana waterthrush
- Yellow warbler



The Spotted Salamander Trail in Kanawha State Forest is located in Kanawha County, WV.
38.26473, -81.66894